



ASHRAE Leadership Presentation

Code of Ethics

“We will act with honesty, fairness, courtesy, competence, inclusiveness and respect for others, which exemplify our core values of excellence, commitment, integrity, collaboration, volunteerism and diversity, and we shall avoid all real or perceived conflicts of interest.”

Sexual Harassment

ASHRAE is committed to educating members to eliminate all instances of sexual harassment. The Society will deploy an online training program for volunteers to help educate and protect all members, and to sustain the professional environment members deserve and expect. This training will be required prior to serving on certain standing committees and/or in leadership positions.

[ashrae.org/about/governance/ashrae-discrimination-and-harassment-policy](https://www.ashrae.org/about/governance/ashrae-discrimination-and-harassment-policy)

Commercialism

ASHRAE’s Commercialism Policy allows for Society activities that fulfill the mission of technological advancement with adherence to business plans that generate income to offset operational expenses such as AHR Exposition, ASHRAE periodicals, website, and Society conference events such as the Welcome Party, luncheons, registration kits, and receptions.

[ashrae.org/commercialism](https://www.ashrae.org/commercialism)

View ASHRAE Governing Documents at [ashrae.org/about/governance](https://www.ashrae.org/about/governance)



ASHRAE Commitment to Care Statement



The health and safety of all ASHRAE conference attendees is a top priority. Out of respect for our fellow attendees, we commit to wear masks indoors, monitor our health, seek medical attention if symptoms develop and adhere to all ASHRAE Commitment to Care protocols. We are committed to the well-being of one another.

[View the full Commitment to Care at ashrae.org/2022WinterCTC](https://www.ashrae.org/2022WinterCTC)



ASHRAE Collaborations and Partnerships



- The American Society for Health Care Engineering (**ASHE**)
- The Building Owners and Managers Association (**BOMA**)
- The Chartered Institution of Building Services Engineers (**CIBSE**)
- Brazilian Congress on Refrigeration, Air Conditioning, Ventilation, Heating and Air Treatment (**CONBRAVA**)
- International Facility Management Association (**IFMA**)
- Federation of European Heating, Ventilation and Air Conditioning Associations (**REHVA**)
- The Sheet Metal and Air Conditioning Contractors' National Association (**SMACNA**)
- United Nations Environment Programme (**UNEP**)

And many more!





**Monday, January 31
12:15 – 2:00 pm**

***Personal Growth. Global Impact. Feed the
Roots.***

**2021-22 ASHRAE President
Mick Schwedler, P.E., Fellow ASHRAE, LEED AP**

Board of Directors

Executive Committee



Through an elaborate committee structure, including committees and councils, ASHRAE policies are established by a **Board of Directors** comprised of Society members elected by the membership. Board members serve terms of one to three years, including the President who serves a one-year term.

President



Mick Schwedler, P.E.
Fellow ASHRAE, LEED AP,
La Crosse, Wisconsin

President-Elect



Farooq Mehboob, P.E.
Fellow ASHRAE, Life Member
Karachi, Pakistan

Treasurer



Ginger Scoggins, P.E.
Raleigh, North Carolina

Vice President



Dunstan Macauley, P.E., HBDP
Arlington, Virginia

Vice President



Tim McGinn, P.E., HBDP
Calgary, Alberta, Canada

Vice President



Donald L. Brandt
Life Member
Phoenix, Arizona

Vice President



Sarah E. Maston, P.E., BCxP
Hudson, Massachusetts

Secretary



Jeff H. Littleton
ASHRAE
Atlanta, Georgia

Board of Directors

Director and Regional Chairs



Region I



Steven C. Sill
Sterling, New York

Region II



Ronald Gagnon
Quebec, Canada

Region III



Mark Tome
Harrisburg, Pennsylvania

Region IV



Steven Marek
Hanahan, South Carolina

Region V



Douglas Zentz
Big Rapids, Michigan

Region VI



Richard Hermans
Lino Lakes, Minnesota

Region VII



Chris M. Gray
Atlanta, Georgia

Region VIII



Randy C. Schrecengost
Austin, Texas

Region IX



Tyler J. Glesne
Omaha, Nebraska

Region X



Devin A. Abellon
Los Angeles, California

Region XI



Eileen Jensen
Vancouver, Washington

Region XII



Robin Bryant
Fort Myers, Florida

Region XIII



Apichit Lumlertpongpana
Bangkok, Thailand

Region XIV



Andres J Sepulveda
Madrid, Spain

Region XV



Richie Mittal
New Delhi, India

Board of Directors

Directors-at-large



Wade Conlan, BCxP
Maitland, Florida



Kelley P. Cramm, PE
Lenexa, Kansas



Dru Crawley, Ph.D., BEMP
Washington, D.C.



Kenneth Fulk
Allen, Texas



Art Giesler
Colleyville, Texas



Jaap Hogeling, P.Eng., MSc, ME
Leiden, Netherlands



Kishor Khankari, Ph.D.
Ann Arbor, Michigan



Ashish Rakheja
Noida, Uttar Pradesh, India

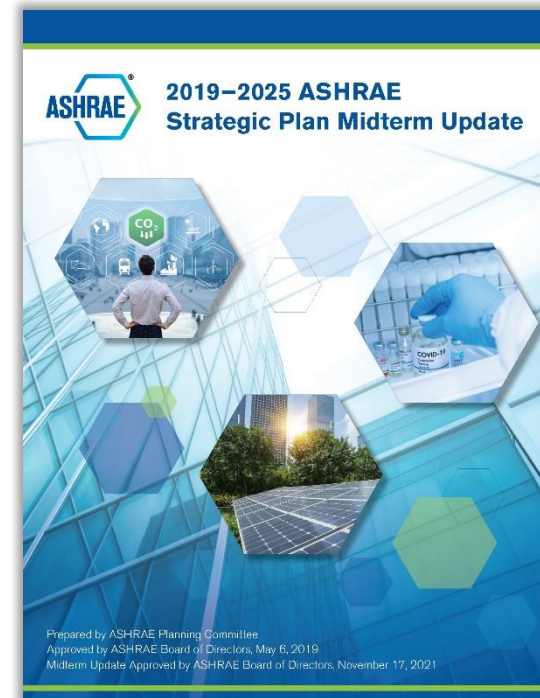
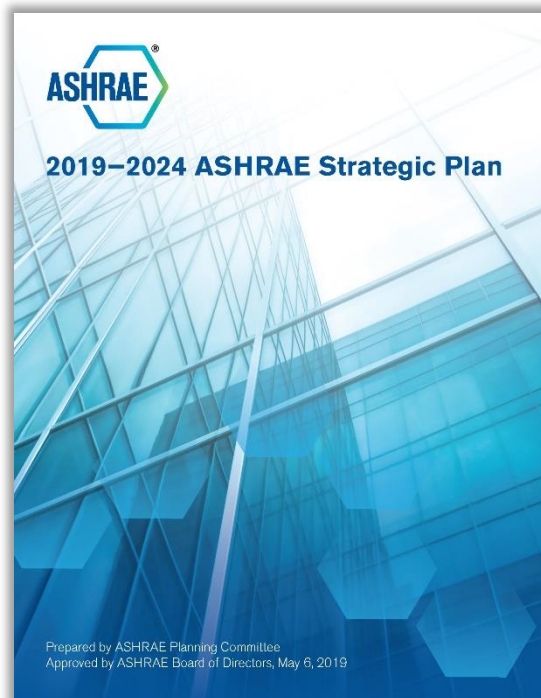


Adrienne Thomle
Reno, Nevada

2019-2025 ASHRAE Strategic Plan Update



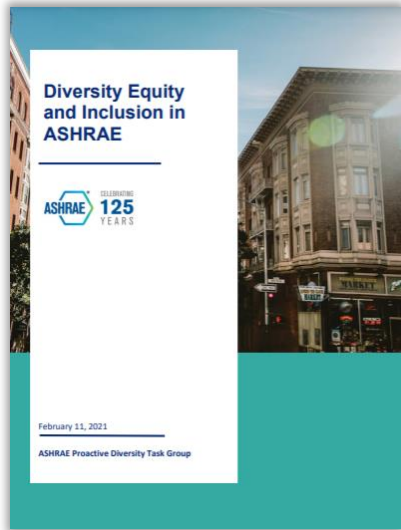
New! See the Midterm Update and 1-Year Extension



To learn more, visit [ashrae.org/strategicplan](https://www.ashrae.org/strategicplan)

Diversity, Equity, & Inclusion (DEI) in ASHRAE

BOD Subcommittee created by the Board January 2021



Purpose of the BOD DEI Subcommittee:

To advise and engage the Board of Directors on:

- All matters relating to diversity, equity and inclusion - with a view to improving organizational awareness and performance in these areas amongst both staff and the Society membership
- The establishment of annual budgets for DEI program and ongoing initiatives
- The prioritization of inclusivity issues which have relevance to ASHRAE, together with plans for addressing these issues

Download the Report

ashrae.org/DiversityEquityInclusion

The BOD DEI Subcommittee was recently approved as a new subcommittee to the Board.

Members of the BOD DEI Subcommittee

Andres Sepulveda (Chair); Adrienne Thomle (Vice Chair); Devin Abellon; Robin Bryant; Art Giesler; Eileen Jensen; Kishor Khankari; Tanisha Meyers-Lisle; Dunstan Macauley; Richie Mittal; Farooq Mehboob (Consultant); Steven Sill



Task Force for Building Decarbonization



- Initiative of ASHRAE President and President-Elect, with the realization that our successful initiatives in building energy efficiency should be expanded to building decarbonization
- **15** members, Co-Chaired by Presidential Members Don Colliver and Tom Phoenix
- **9** working groups with over **100** international volunteers, developing resources and tools to:
 - Provide policy makers with information on how they might achieve goals
 - Provide recommendations and best practices for industry stakeholders

Your input is welcome!

- What products, tools, or outcomes do you as ASHRAE members need from this group?
- What educational or training products do you need to assist your understanding of decarbonization? Timeframe?
- What metrics should be used in the carbon design process?

Email questions or input to decarb@ashrae.org

To learn more, visit [ashrae.org/decarb](https://www.ashrae.org/decarb)

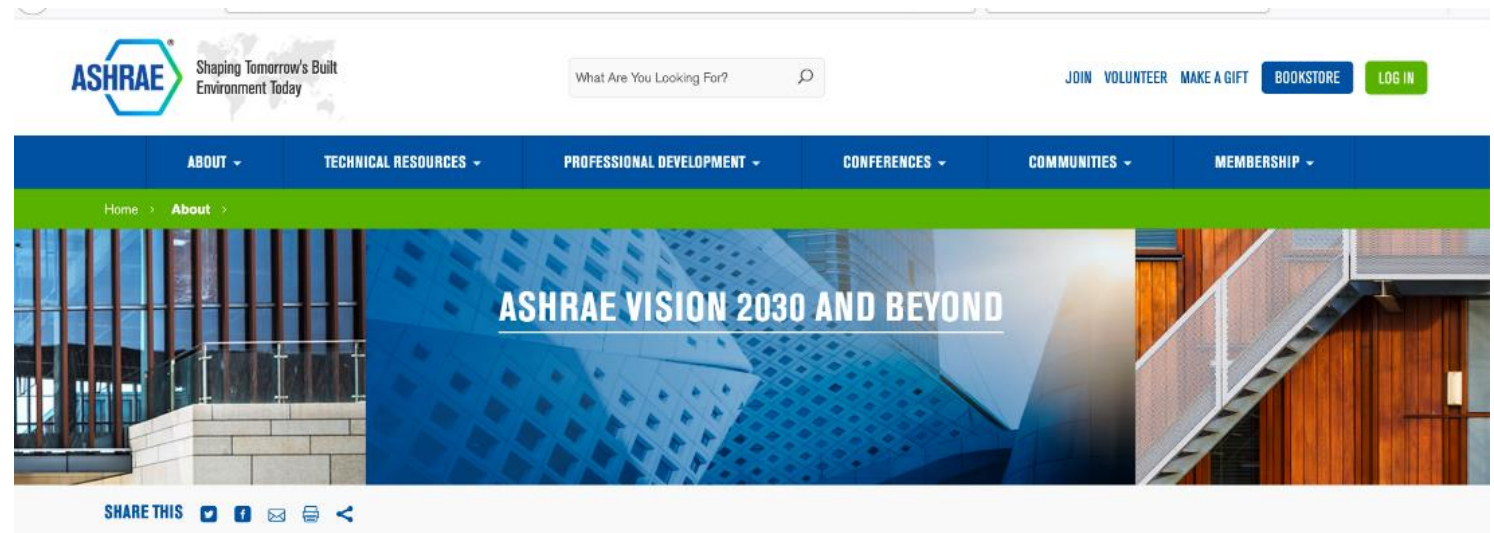


ASHRAE Vision 2030 and Beyond



- Serve as a knowledge base for defining how buildings of the future will be designed, constructed, and operated.
- Continually drive the innovative and strategic improvements needed during the revolution of the built environment.

Visit ashrae.org/vision2030 to view the complete **mission statement** along with all the resources and knowledge produced to transform tomorrow's built environment.



Email questions or comments to vision2030@ashrae.org

Society Updates

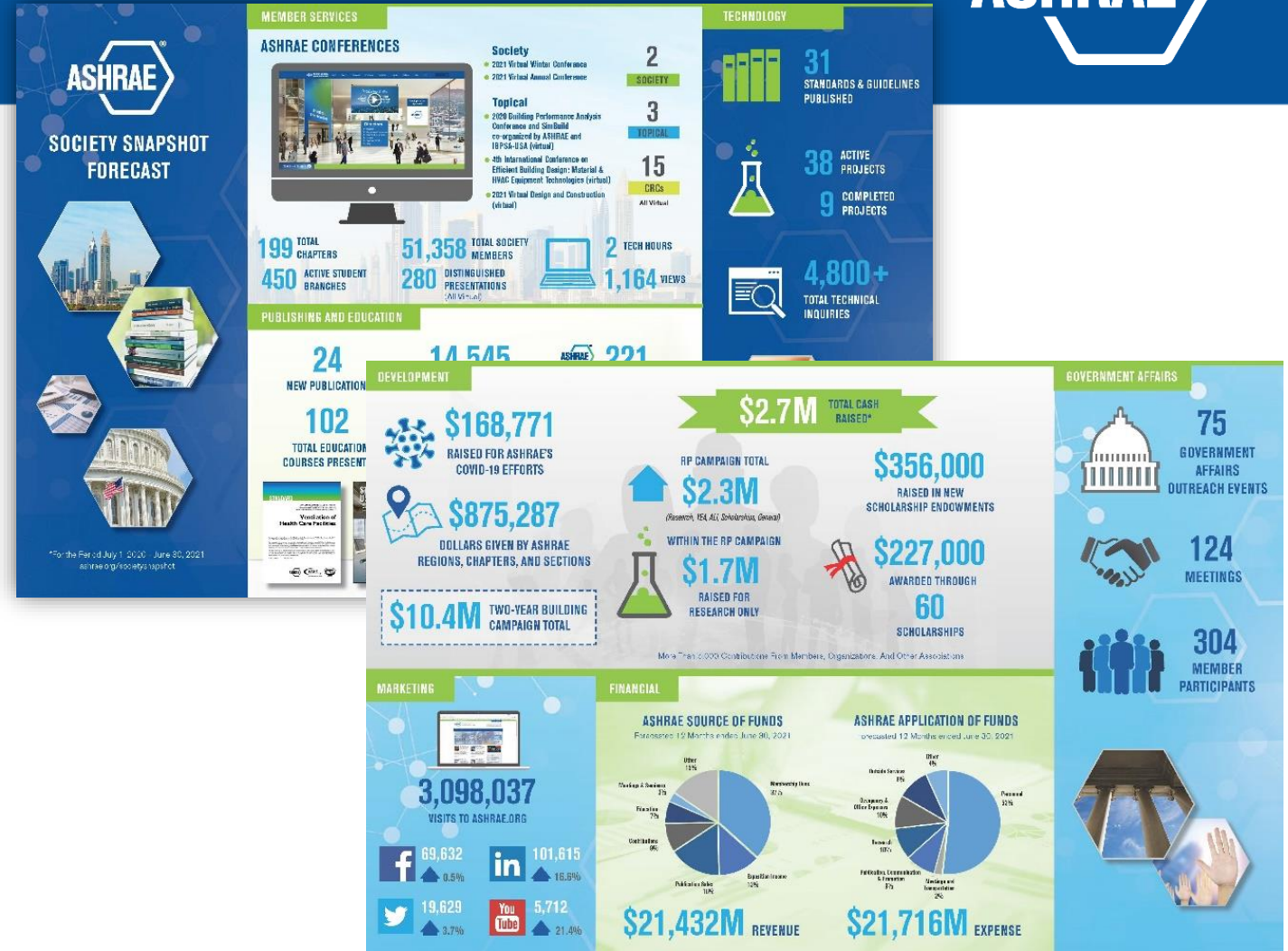


Approved By Laws Change: Full Member

ASHRAE Membership voted to approve changing the title of 'Member' grade to 'Full Member' grade to differentiate between those who have provided necessary education and professional background information to the Society in order to qualify as a Full Member grade.

Request to Advance to Full Member Grade

Associate and Affiliate members may request to advance to Full Member grade by updating their membership bio in their ashrae.org profile and notifying membership@ashrae.org.



View the latest Society Snapshot at ashrae.org/about/society-snapshot

Nominations Needed!



Committee Nominations

- Due mid-February. Council, RAC, TAC, Standards and Handbook nominations are due mid-September.
- Speak with your committee ExO if your current appointment ends in June and you wish to be nominated for another committee.

 [ashrae.org/committee-nominations](https://www.ashrae.org/committee-nominations)

Honors & Awards Nominations

ASHRAE's awards fall into one of six categories:

- Personal Honors
- Personal Awards for General & Specific Society Activities
- Paper Awards
- Society Awards to Groups or Chapters
- Chapter and Regional Awards

[ashrae.org/honorsandawards](https://www.ashrae.org/honorsandawards) 

ASHRAE Technical Committees (TCs) at [ashrae.org/communities](https://www.ashrae.org/communities) 

New Global Headquarters



ASHRAE has officially moved into a renovated **66,700 ft² building**, originally built in 1978.



Over \$10.3M in monetary and in-kind support was received from generous stakeholders to support this renovation project.



Grand opening event on Nov. 18, 2021, was **live streamed** to ASHRAE's **51,000 members** around the world.



PV system installation completed in October 2021, marking operation at NZE performance.



**180 Technology Parkway NW
Peachtree Corners, GA 30092**



See the video tour, grand opening photos, building technical features and our generous sponsors at [ashrae.org/newhq](https://www.ashrae.org/newhq)




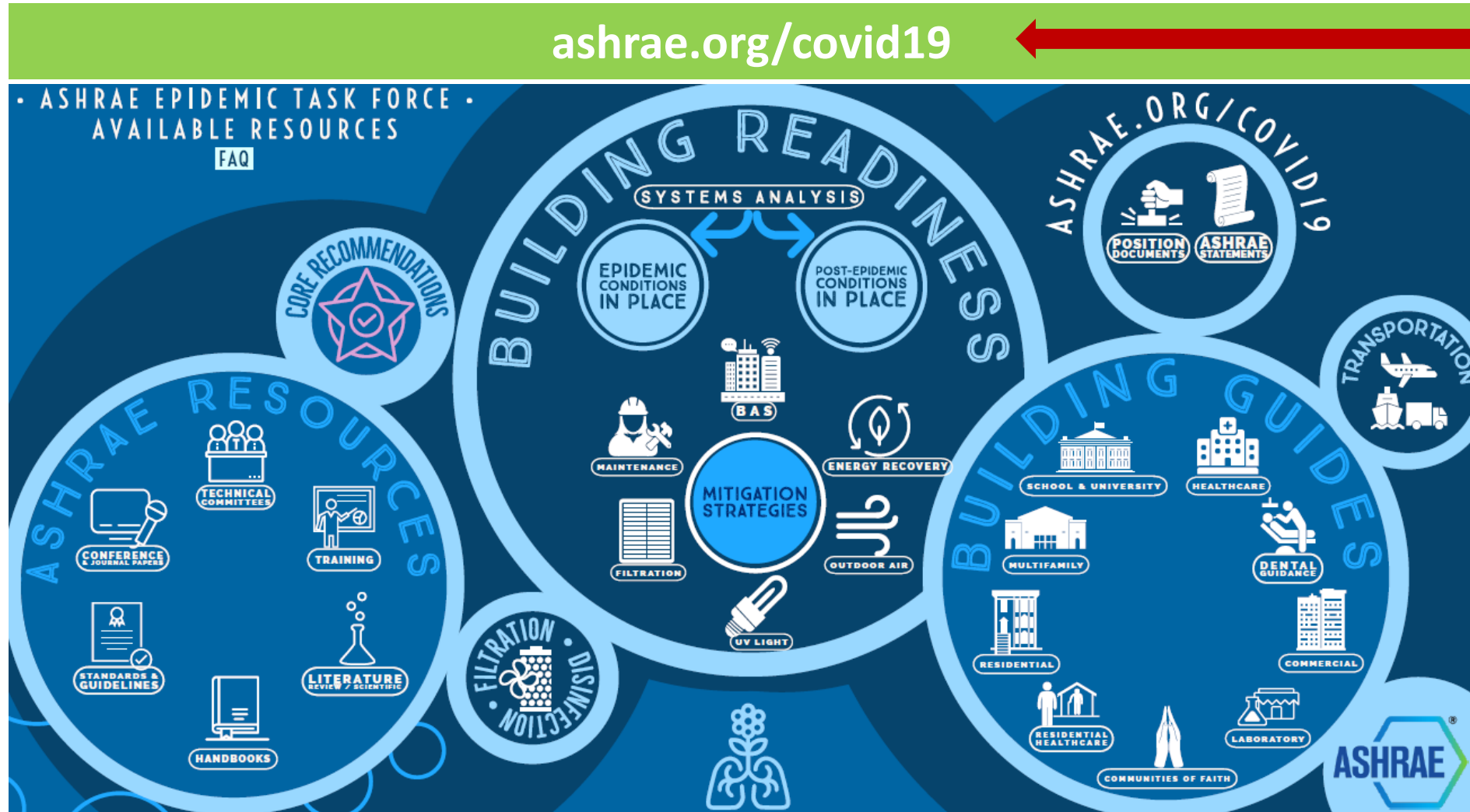
Epidemic Task Force (ETF)



Continues to provide COVID-19 related resources, making ASHRAE a trusted source of critical guidance during the pandemic.

[ashrae.org/covid19](https://www.ashrae.org/covid19) averages more than **40,000 views** per month!

 Clickable infograph for easy navigation, FAQ's and free resources



Membership & Communities



→ Your Benefits [ashrae.org/membership](https://www.ashrae.org/membership)

New Member Benefit Selection Effective Society Year 2021-22



Full dues paying Full and Associate Members joining or renewing into SY 21-22 may select from the following complimentary annual member benefits:

- ✓ ASHRAE eLearning Course
- ✓ ASHRAE Standard (PDF)
- ✓ ASHRAE Handbook (PDF)

Members can add a Handbook Online subscription or printed copy of the Handbook for an additional fee.



51,000+ Society Members including **5,200+** Student Members



15 Regions with **199** Chapters and **400+** Active Student Branches




Connect-A-Colleague

Quickly invite peers to join ASHRAE and participate in committees using a pre-written email invitation at [ashrae.org/connect](https://www.ashrae.org/connect)

Your Community [ashrae.org/communities](https://www.ashrae.org/communities) ←

Research Promotion (RP)

The Research Promotion campaign supports ASHRAE Research, Education, YEA programs, Scholarships, Endowed Funds, and the RP General Fund.

 **Thank You** to all the **donors and volunteers** for your support during this challenging year.

Society Year 2020-2021 total raised: **\$2,300,519**

- **\$1,769,785** in contributions for Research
- **\$332,698** for ASHRAE Foundation
- **\$134,666** for Scholarships
- **\$63,370** for General Fund, YEA, and Education

ASHRAE Foundation Grants & Scholarships

The ASHRAE Foundation is an endowed trust that provides funding for professional development and research programs, supplies qualified engineering students with much needed scholarship assistance, and provides grants to help support the Society's vital work.

SY 2021-22

33

Society Scholarships totaling \$152,000

24

Chapter-Awarded Scholarships totaling \$52,000

ASHRAE awards
\$450,000 in
scholarships
each year!!

Donate, Volunteer, Apply, and Learn More at
ashrae.org/support

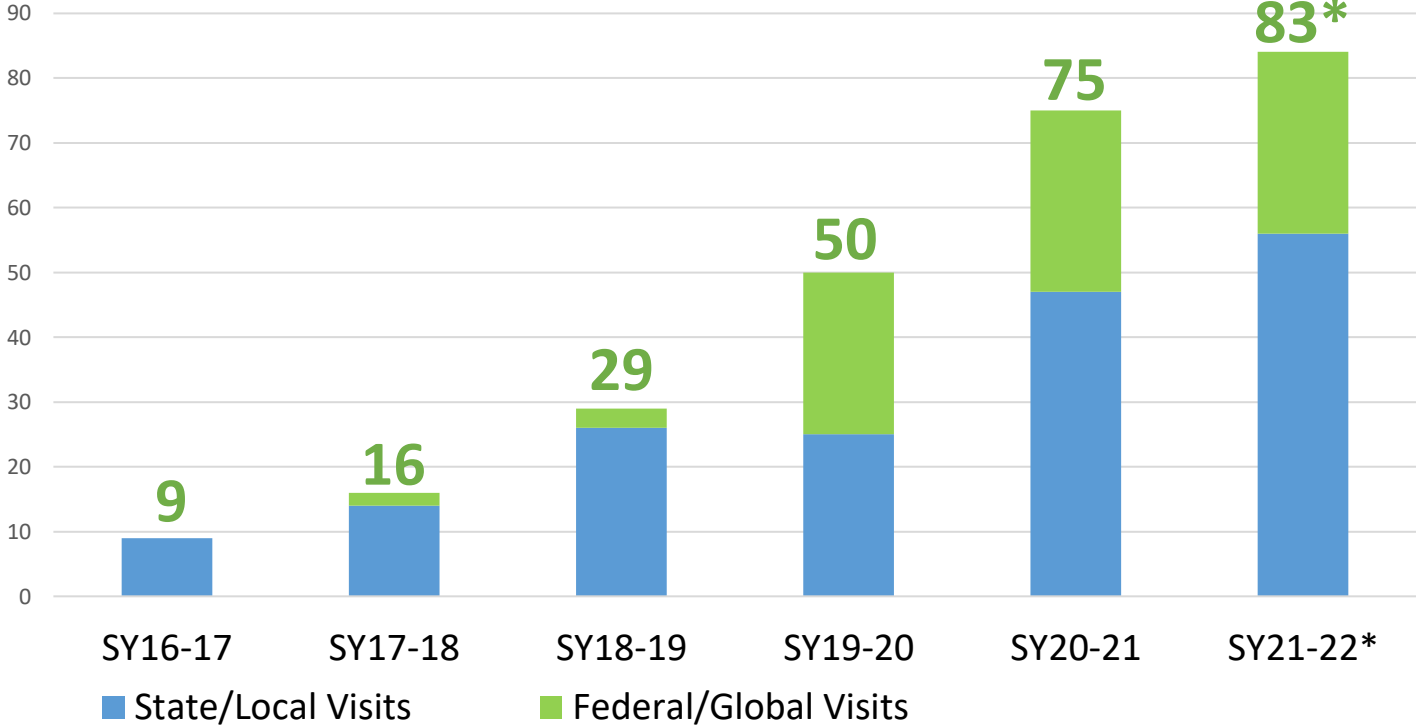




ASHRAE Government Affairs program works to establish ASHRAE as a leading source of trusted expertise for policy-makers in the development of legislation and regulations affecting the public and HVAC&R industry.

- **Government Affairs Update** bi-weekly newsletter provides updates on government activities. Subscribe online or by emailing GovAffairs@ashrae.org.
- **Government Outreach Events** connecting ASHRAE volunteers with policy makers.
- Briefings & Testimony, Regulatory Meetings, Hearings, and Comments. Letters related to public policy priorities.

Government Outreach Events



*SY21-22 shows the goal, not total events held

Get Involved + Get Resources
ashrae.org/government-affairs

Professional Development



eLearning

Convenient, on-demand courses for individuals or groups.

90+ online courses starting at **\$42** for members.

Group Rates Available

Updated Course Catalog:
elearningcatalog.ashrae.org



ASHRAE Learning Institute (ALI)

Instructor-led courses in a variety of formats.

See the Updated Schedule of In-Person and Virtual HVAC Design Courses!

- Level I – Essentials
- Level II – Applications

NEW Courses Added to the Instructor-led Online Series
ashrae.org/onlinecourses

Courses Available for ASHRAE Chapter, and In-Company Presentations.

Certification

Validate and promote your expertise via online examination and digital badging.

Building Design

- Energy Modeling (BEMP)
- Healthcare Facility Design (HFDP)
- High-Performance Building Design (HBDP)
- HVAC Design (CHD)

Building Performance

- Commissioning (BCxP)
- Energy Assessment (BEAP)

Building Operations

- Operations & Performance Maintenance (OPMP)

ashrae.org/professional-development





Personal Growth. Global Impact. *Feed the Roots.*

Mick Schwedler, P.E., LEED AP
2021-2022 ASHRAE Society President

New Initiatives from President Mick Schwedler



Learning Pathways



ASHRAE Learning Pathways

provide a way for professionals in HVAC&R to organize and plan their professional development through topical groupings of educational resources. Pathways include:

- HVAC Design – Basics
- Pathogen Mitigation

Member to Member Connection Videos with Mick Schwedler

New monthly video series, fireside chat style, featuring guests and a variety of topics relevant to ASHRAE members.

SIX Videos Now Available! Watch at ashrae.org/president and ASHRAE social media channels.

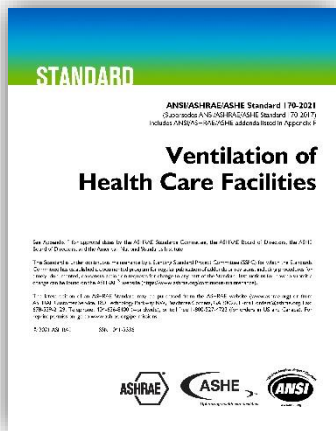


ashrae.org/president

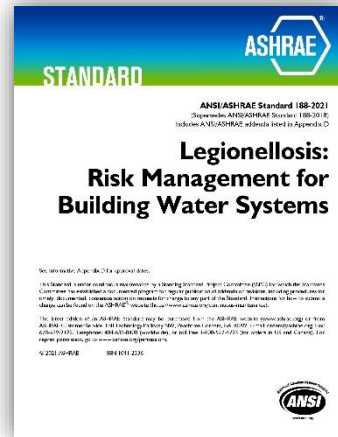
Publications and Standards



Recently published items available at ashrae.org/bookstore



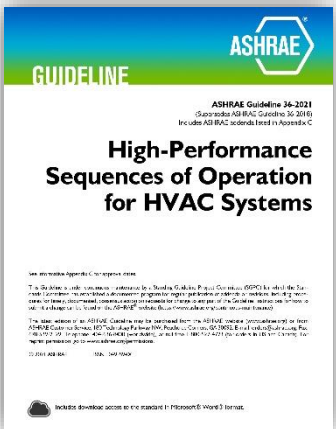
Standard 170-2021
Ventilation of Health Care Facilities (ANSI Approved; ASHE Co-sponsored)



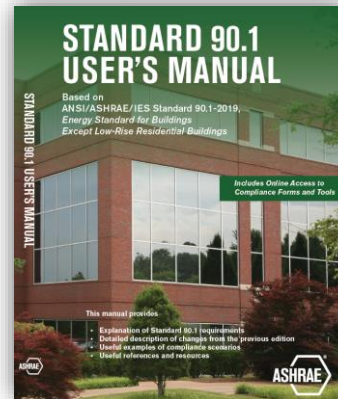
Standard 188-2021
Legionellosis: Risk Management for Building Water Systems (ANSI Approved)



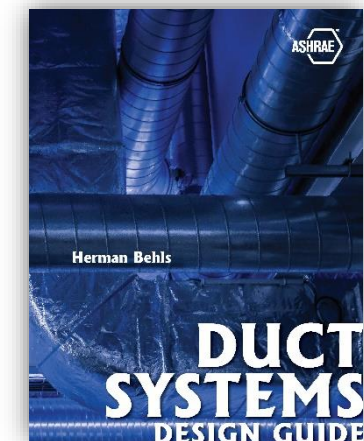
Lucy's Engineering Adventure



Guideline 36-2021
High-performance Sequences of Operation For HVAC Systems



Standard 90.1 User's Manual
Based on ANSI/ASHRAE/IES Standard 90.1-2019



Duct Systems Design Guide

ASHRAE Technology Portal

Provides a one-stop location for ASHRAE papers, articles, reports, Handbook PDFs, and seminar recordings.

Online Standards Database

Allows access to public review drafts for standards, guidelines, and addenda to submit comments, to do online balloting, and to submit proposals to standards and guidelines.

Zero Energy Advanced Energy Design Guides (AEDG)

Are available for free download: offices and K-12 schools.

Science and Technology for the Built Environment

Provides free online access to archival research publication offering comprehensive reporting of original research.

ASHRAE Technical Apps

Deliver mobile design, calculation, and analysis tools to the palm of your hand.

Free Technical Resources

Offer downloads of a variety of well-known resources to everyone.

ASHRAE 365

Updates on all things ASHRAE, for free and year-round.

Find these resources and many more at ashrae.org



ASHRAE Topical Conferences



MAY
2022

IAQ 2020: Indoor Environmental Quality Performance Approaches
May 4-6, 2022 | Athens, Greece

JUN
2022

Ventilation 2022: 13th International Industrial Ventilation Conference For Contaminant Control
Jun 22 – 24, 2022 | Toronto, Canada

SEP
2022

2022 ASHRAE Building Performance Analysis Conference
Sep 14 – 16, 2022 | Chicago, IL

OCT
2022

The Fifth International Conference on Efficient Building Design
Oct 20–21, 2022 | Beirut, Lebanon

DEC
2022

Buildings XV Conference
Dec 5–8, 2022 | Clearwater Beach, FL



[ashrae.org/conferences](https://www.ashrae.org/conferences)



2022 ASHRAE Annual Conference



2022 ASHRAE Annual Conference June 25-29, 2022 Toronto, ON, Canada

Registration opens February 2022
[ashrae.org/2022Annual](https://www.ashrae.org/2022Annual)



Thank You!